



DWELLING™ | REAL ESTATE

COME INSIDE™

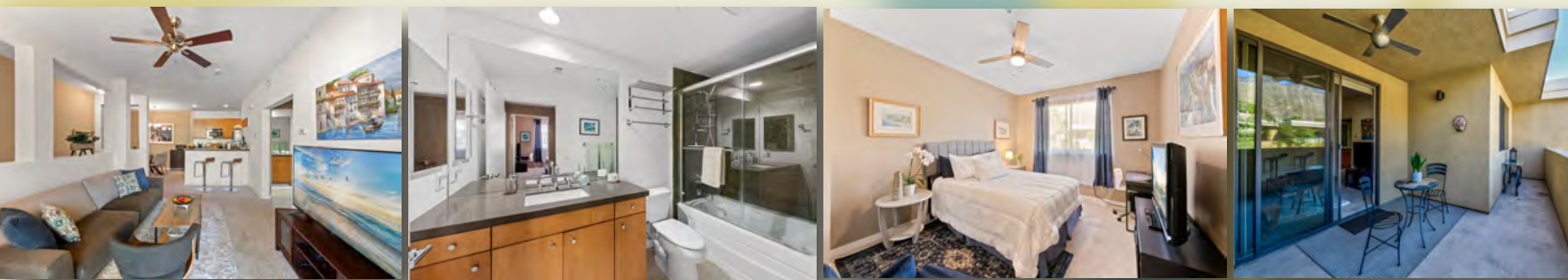
870 East Palm Canyon Drive #204
Palm Springs, CA 92264

1 BD
1 BA
748 SQ FT

\$385,000

Attached four-car garage!

Enjoy grand mountain views and plenty of privacy at the Biltmore Colony! This welcoming, beautiful and delightful 1 BR / 1 BA unit offers an attached four-car garage! The welcoming foyer stairway and the cool vibe energy will transcend you into tasteful, desert living space with high ceilings. This unit provides an open concept living / dining / kitchen / laundry area that inspires the lifestyle that is PALM SPRINGS. Enjoy a large balcony for evening libations, spending time with good friends, family, relaxing weekends and great fun entertaining. The Biltmore Colony community has 3 pools, 3 spas, guest parking, well maintained landscapes and more. Just minutes to the ACE Hotel, Koffi, downtown Palm Springs, businesses and other area highlights!



ROBERT CIPOLLONI
DWELLING™ | REAL ESTATE

CEO, President & Real Estate Broker / Advisor | Los Angeles Metro & Greater Palm Springs

D: 760-285-6161 C: 213-399-9001
E: robert@dwellingre.com
W: www.dwellingre.com

CalRE# 01458843

The property information herein is derived from various sources that may include, but not be limited to, county records and the Multiple Listing Service, and it may include approximations. Although the information is believed to be accurate, it is not warranted and you should not rely upon it without personal verification. ©2020 Forward Vision INC™ dba DWELLING™ | REAL ESTATE. All Rights Reserved. Forward Vision INC™ dba DWELLING™ | REAL ESTATE fully supports the principles of the Fair Housing Act and the Equal Opportunity Act.