



DWELLING™ | REAL ESTATE

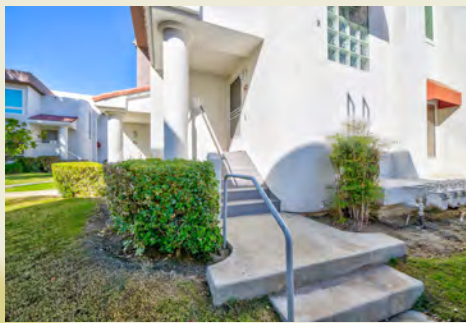
COME INSIDE™

401 S El Cielo Rd #62,
Palm Springs, CA 92262

2 BD | 2 BA | 1,196 SQ FT | \$365,000

Mountain Views in this Poolside Paradise!
Six Pools with Spa's & Three Tennis/Pickleball Courts!
HOA covers the Roof!

Palm Springs Condo living with Mountain Views and a Poolside Paradise! Experience the epitome of Palm Springs living in this stunning, turnkey condo. Nestled within the meticulously maintained La Palme gated community, this unit offers breathtaking mountain views and luxurious amenities. Key Features include: Prime Location, Quick access to shopping, dining, and entertainment. Community pool and spa in close proximity to the units front door. Utilize the spacious two bedrooms as two primary suites each with their own full bathrooms. This condo is light and bright with mountain views and a spacious balcony with a motorized awning for shade. Enjoy the energy efficient newer double-pane windows and sliders installed in September 2021, and stay cool and comfortable. Experience low-maintenance living with HOA fees that include community landscaping, pools, tennis/pickleball courts, cable TV/DVR, high-speed internet, trash, and water. For peace of mind enjoy an extended land lease to 2076! Don't miss this opportunity to own a piece of Palm Springs paradise. Schedule your private showing today!



LOUIS GAMBARDELLA
DWELLING™ | REAL ESTATE AGENT

Realtor

E: louis@dwellingre.com
C: 619-867-9589
CalDRE# 02030981



ROGER INDORF
DWELLING™ | REAL ESTATE AGENT

Greater Palm Springs & Los Angeles Metro

E: roger@dwellingre.com
C: 323-304-7373
CalRE# 02149444